

# Ruislip High School Sixth Form Open Evening





# Mr Davies

Headteacher

**'Leaders have designed and implemented a rich and highly ambitious curriculum for pupils.'**

**'Sixth-form students, for example, have many opportunities to take on leadership roles, including mentoring younger pupils.'**

**'Pupils are prepared exceptionally well for the next stage of their education. Staff make sure that sixth-form students also achieve highly and move on to further education, training or employment that matches their goals.'**

**'Pupils thrive at this school.'**

**'Pupils receive a highly ambitious education.'**

**'Pupils appreciate the excellent quality of careers advice and guidance.'**

# Key Stage 5 headline measures

<b>A-level or equivalent grade</b>	<b>RHS results 2024</b>
<b>A*-A %</b>	<b>21</b>
<b>A*-B %</b>	<b>53</b>
<b>A*-C %</b>	<b>75</b>
<b>A*-E %</b>	<b>99</b>

# State-of-the-art facilities



# State-of-the-art facilities



# Progression

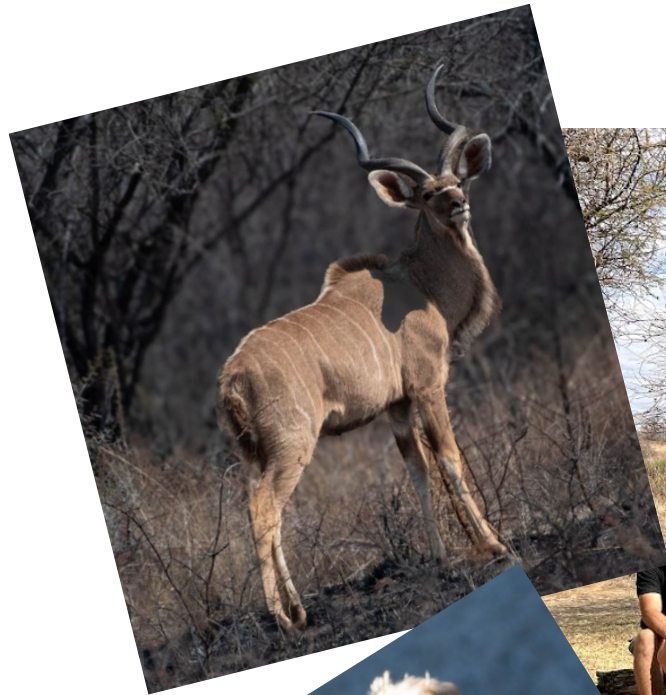


# The extended curriculum: Model United Nations in New York





# South Africa



# Ruislip High School Sixth Form Open Evening





# Mr Peacock

Head of Sixth Form

# What do you get at Ruislip High School Sixth Form?

- Academic excellence
- Outstanding pastoral and careers guidance
- Fantastic extra- and super-curricular opportunities

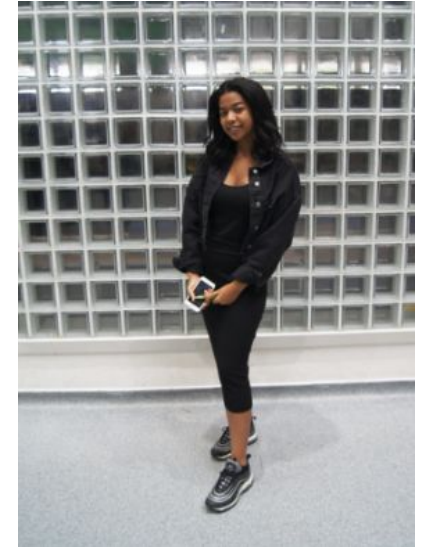
**A competitive, comprehensive, community Sixth Form**

**Ofsted OUTSTANDING**

**Top 25% of progress at KS5 nationally - summer 2024**

# Careers and post-18 support

- From the most recent sixth form review conducted by our Trust school improvement director: *“post-18 and careers support is of an exceptionally high quality and students appreciate the excellent support they receive.”*
- On average, our students are **three times more likely** to get into Oxbridge than students from neighbouring selective sixth forms
- We have also supported students into apprenticeships with **prestigious companies** such as Sky, the Royal Air Force, KPMG and Transport for London, through the apprenticeships tutor group.
- **No matter what your ambition - Ruislip High School Sixth Form is the place to be to get you there, with bespoke 1:1 support from:**
  - Your Head of Year and form tutor
  - Two superb learning mentors

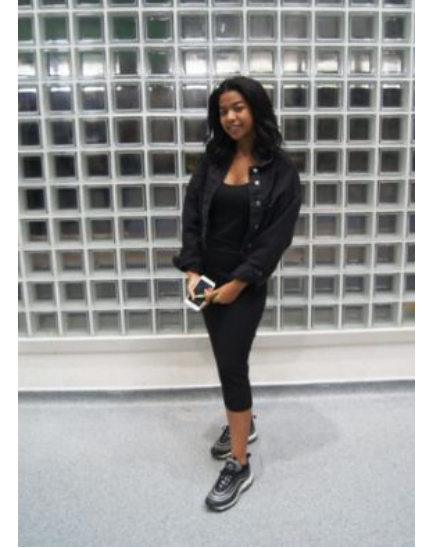


# Bespoke university and apprenticeship programmes



## University:

- University visits in Year 12
- 1:1 post-18 options mentoring throughout Year 12 and 13
- Talks and supercurricular opportunities throughout the year
- Tutor and supervisor 1:1 application support



## Apprenticeships:

- 1:1 options meetings throughout Years 12 and 13
- Visiting speakers and workshops
- A bespoke bank of work experience providers
- 1:1 support with applications
- Apprenticeships tutor group



Alisha A	UCL (Medicine)
Amalie M	UCL (Medicine/Pharmacy)
Ayanda M	Royal Holloway (Psychology)
Scarlett P	University of Bristol (Law)
Scarlett R	Queen Mary University (Law)
Harry S	Queen Mary University (Accounting & Finance)
Amber W	Loughborough University (Psychology)
Simmeicia WB	Liverpool Institute of the Performing Arts
Lily T	European Theatre Arts
Bradley B	TfL - Project Management
Vian N	JP Morgan - Finance

**Every student who chose university as their post-18 pathway was offered a place!**

**RHS students regularly get into Oxbridge**

# Students on the RHS Reach Pathway will:

- Have the opportunity to take 4 A Levels.
- Receive personalised and one-to-one coaching for admissions tests, interviews and entry to Oxbridge and Russell Group universities, as well as extremely competitive courses like medicine, dentistry and veterinary science;
- Have the opportunity to attend Russell Group University Masterclasses across the curriculum;
- Have the opportunity to attend Masterclasses at the Royal Institution for STEM subjects;
- Attend Oxbridge and Sutton Trust summer schools and shadowing schemes;
- Be eligible for a trip to the University of Cambridge to explore the possibility of studying at Oxbridge
- Be eligible for a place on The Brilliant Club Scholars' Programme (for more information visit <https://thebrilliantclub.org/the-brilliant-club-for-pupils/info-for-parents-and-carers/>);
- Be able to participate in the University of Cambridge HE+ scheme which offers stretch and challenge activities outside of the curriculum to prepare students for study at elite universities.

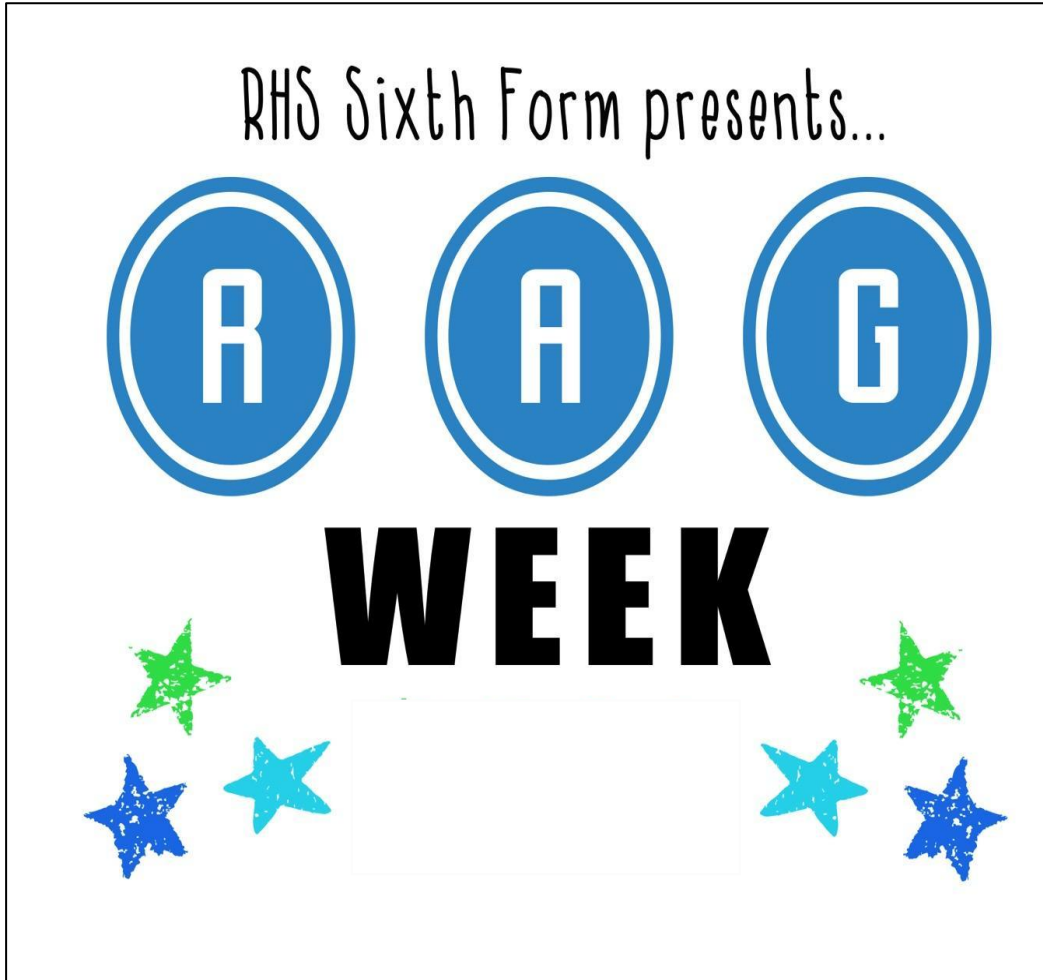


# Extra-curricular

- Amazing trips
  - University trips
  - Apprenticeship fair trips
  - Houses of Parliament
  - New York & Washington DC
  - Norfolk
  - Greece
  - PGL
  - Geneva (CERN)
  - Model United Nations General Assembly
  - South Africa
- & many more!



# Giving back to the community



Christmas Community Event and Food Bank



Macmillan Bake Sale

# Student Leadership Team


- Develops your leadership skills
- Gives students the opportunity to mentor younger students and give back to the school



**Our student leaders on why Ruislip High  
Sixth Form is the best choice for you!**

# Our entry requirements



- 5 grade 4s (or equivalent) at GCSE.
- Some subjects will have subject specific requirements which are higher.



YOU ARE HERE / SIXTH FORM / COURSES / COURSES AND ENTRY REQUIREMENTS

## Courses

[Courses and Entry Requirements](#)  
The 16-19 Study Programme



## Courses and Entry Requirements

All students must achieve at least five grade 4s at GCSE to be able to study at Ruislip High School Sixth Form. In most subjects, there are further requirements as detailed below.

Grade 3 will not be considered for any subject under any circumstances.

A Level Subject:	Minimum GCSE grades required:
Art	Grade 6 in Art; 5 may be considered if places are available on course.
Biology/Chemistry/Physics	Grade 7/7 in Combined Science OR Grade 7 or above in Biology/Chemistry/Physics Grade 6 in Mathematics
BTEC Sport	Five GCSEs at grades 4-9, including a grade 4 in English Language
BTEC Travel and Tourism	Five GCSEs at grades 4-9, including a grade 4 in English Language

# Subject blocks - selected on the application form

Subject to staffing and availability, but we are open to feedback.

Block A	Block B	Block C	Block D	Block E
Applied Science vocational course	Biology	Law	Art	English
Drama	Sociology	Media Studies	Chemistry	Geography
Physics	Politics	Economics	Law	Mathematics
Psychology	History	Mathematics	Psychology	Health and Social Care
Politics	Further Maths	Sociology	Sport BTEC	Music
French		Computer Science	Spanish	

## Vocational options (instead of taking three traditional A-Levels)

- Gain the opportunity to get hands-on experience in a field or subject
- A viable alternative to the more theory-focused, classroom-based ways of learning

BTECs are becoming a more popular path to both university and particular jobs in place of, or in addition to, A Levels.

In addition to the comprehensive A-Level subjects offer, the Level 3 BTEC subjects offered are:

- Sport
- Health and Social Care
- Applied Science

**NOTE:** This offering is currently provisional and depends on the outcome of the government vocational review this autumn.

# How should I pick my options?

- Your choice will be partially dictated by our provisional option blocks, which you can see on the application form in the Atrium
- General advice for choosing subjects:
  - If in doubt as to what to pick: pick some of the Russell Group's 'facilitating subjects'
    - English literature
    - History
    - Maths/further maths
    - Physics
    - Biology
    - Chemistry
    - Geography

## Why these subjects?

Lots of specialist courses at A-level and beyond take a large part of their content or structure from facilitating subjects. For instance, **engineering** includes elements of maths and physics, and communication and culture includes skills from **English** and media studies – so choosing a facilitating subject will prepare you for a range of courses, university degrees and apprenticeships later in life. They are also mandatory for entry into some university courses.



# How should I pick my options?

**The most important criteria for choosing sixth form subjects are:**

1. What you are likely to enjoy and be good at? (How are subjects examined?)
2. Are there any particular subjects and grades you may need? If you have a particular career, job or further study in mind you may need to choose certain A levels in order to meet entry requirements.
3. How open do you want to keep your future study and career choices?

# What should I do to help me pick my options in the coming weeks?

**If your child already attends Ruislip High:** If students have questions, in the first instance, they should speak to their form tutor or subject teachers who know them best. If those staff members cannot answer a specific question, they will refer the question to me. Your child is also advised to book a careers appointment with our impartial careers adviser.

**When applying tonight, students should indicate which subjects they are considering on the form. The final choices don't have to be confirmed until your child is interviewed in the Spring term.**

**If your child doesn't currently attend Ruislip High:** I am happy to meet with you or arrange a telephone appointment to discuss what Ruislip High Sixth Form can offer. Please contact the school office to arrange this.

# How do I apply and what happens next?

- Wednesday 13th November, 2024: Applications open via Applicaa. **You are strongly encouraged to do this in the atrium before you leave.**
- Wednesday 22nd January, 2025: Application form deadline
- Wednesday 5th February, 2025: Students find out via email if they have been invited to an interview. Selection for interview is based on the strength of the application form and predicted GCSE grades. Students must be on track to attain at least 5 GCSEs at grade 4 and above, including English and maths, to be invited to interview.
- Tuesday 4th March, 2025: Interview day. Part of the interview will entail students confirming their course choices.
- Monday 31st March, 2025: Candidates will be notified of the provisional outcome of their application by this date. All places are conditional upon candidates meeting the academic criteria when they receive their GCSE results.
- Tuesday 8th July, 2025: Sixth Form induction day
- Thursday 21st August, 2025: GCSE results day and sixth form enrolment

# Thank you and enjoy your evening

- The subject and Life in the Sixth Form stalls remain open until 7.30pm.
- You can make your application (subject choices are provisional until March's interviews) on the chromebooks in the atrium as you leave.

Current RHS students: Check your school email for your login details. If you can't find them, use your school email as your username and click "forgot password".

Thank you and enjoy your evening!

