

# Year 12 Literature

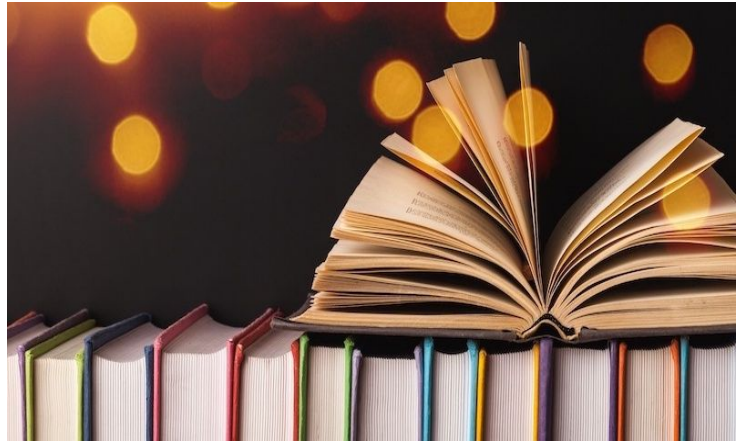
## HOLIDAY HOMEWORK

W

elcome to A Level Literature.

For your holiday homework, you need to read two texts:

- One modern prose and
- One 19th Century text or a text from a different setting (a different country, a different time, a dystopia etc.)



Try to find something you will really enjoy as opposed to whatever you can get your hands on. This course is about the love of literature so find something you can sink your teeth into!

Once you've read these books, answer the below questions for both of the texts (notes are fine):

1. What is the story type? Does it fit into a particular genre? Tragedy, comedy etc.
2. How is the text structured? Do you think this structure is effective in developing the plot?
3. How does the text open? What is being introduced and why? Is anything being withheld?
4. What is the setting like? Is it made into a character in itself? What impact does the setting have on the development of the plot?
5. Who is the narrator of the story? Are they reliable? Are they likeable? Are they active participants in the story?
6. Who are the characters? Are they typical? Are they likeable? How? Why?
7. Are there narrative gaps? What information do you need to piece together yourself? Does this add to the intrigue/mystery or is it frustrating?
8. How does it end? Is it a satisfactory ending? Is there closure? Any plot holes?

**Bring this with you to lessons in September. Happy reading!**